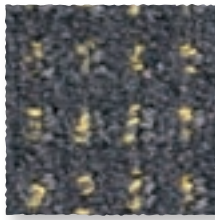




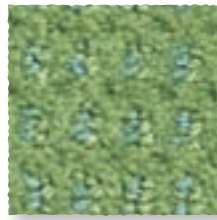
Agit naturellement contre les bactéries et les acariens.  
Naturally fights bacteria and dust mites.



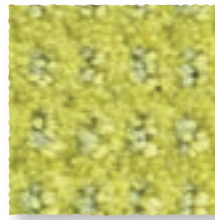
Blé 330 4 m



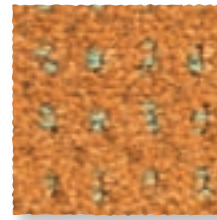
Crépuscule 764 4 m



Jungle 250 4 m



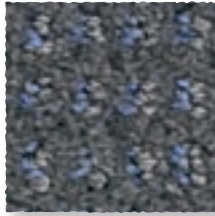
Citrus 240 4 m



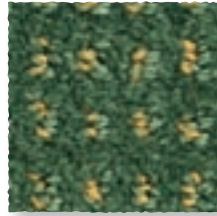
Safran 455 4 m



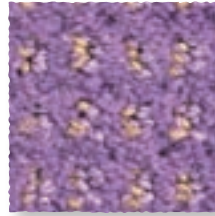
Mastic 620 4 m



Taupe 760 4 m



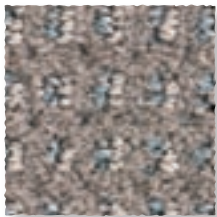
Olive 258 4 m



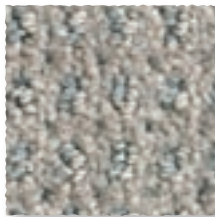
Glycine 840 4 m



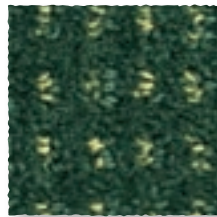
Abricot 450 4 m



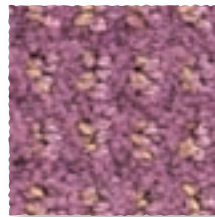
Muscade 730 4 m



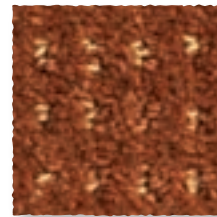
Lin 720 4 m



Empire 274 4 m



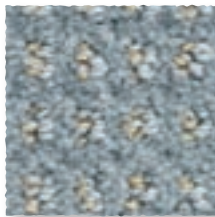
Orchidée 530 4 m



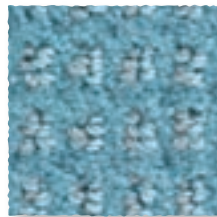
Chicorée 469 4 m



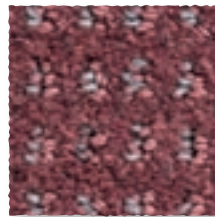
Vison 761 4 m



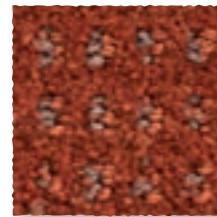
Paloma 930 4 m



Porcelaine 140 4 m



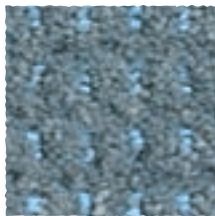
Figue 550 4 m



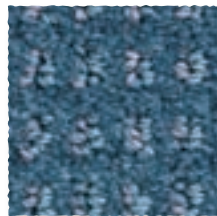
Terre cuite 464 4 m



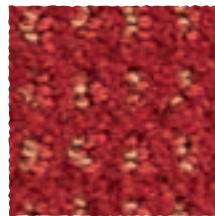
Merbau 780 4 m



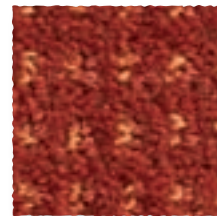
Orage 949 4 m



Pétrole 170 4 m



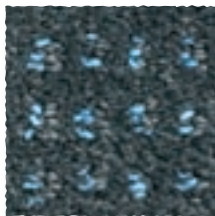
Opéra 580 4 m



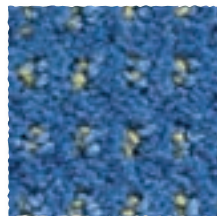
Cerise 572 4 m



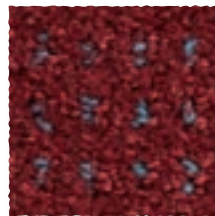
Palissandre 790 4 m



Étain 969 4 m



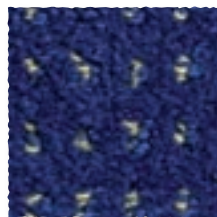
Océan 158 4 m



Grenat 581 4 m



Ébène 980 4 m



Outremer 178 4 m



Aubergine 890 4 m

